

## **Lecturer/Senior Lecturer in Primary Mathematics Education**

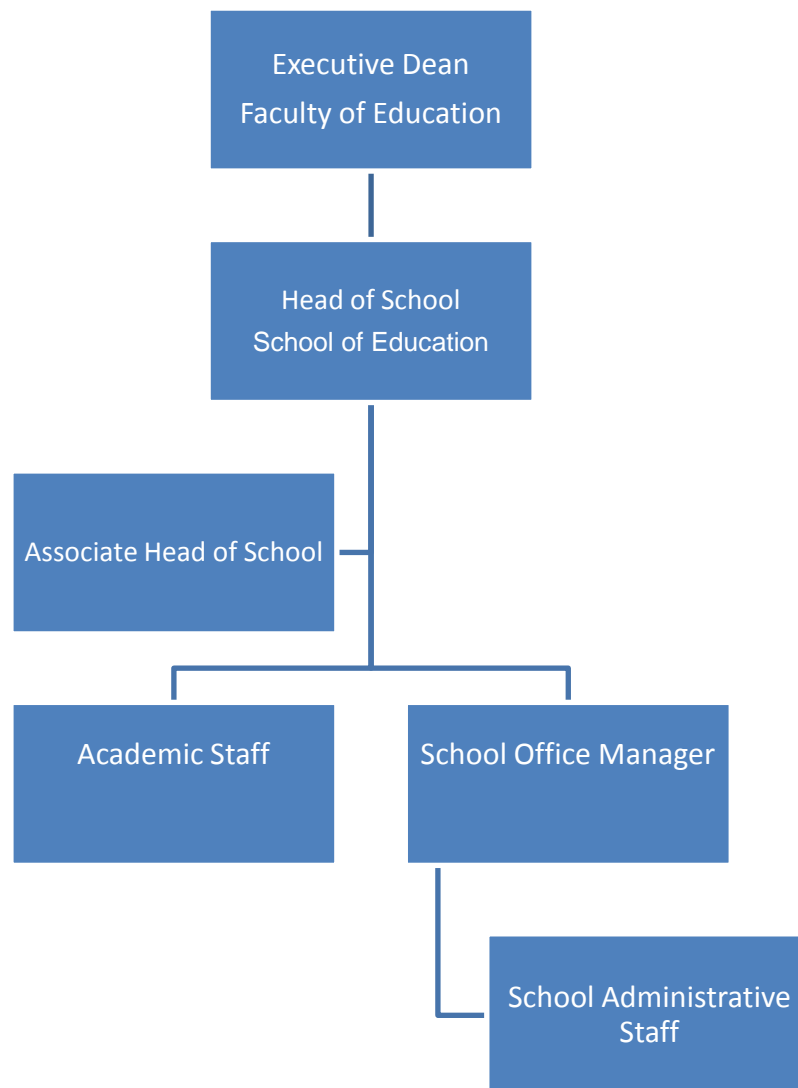
Faculty of Education  
School of Education

Position Number	111605
Campus	Wagga Wagga
Classification	Level B/C
Nature of Employment	Continuing
Employee Contribution to Superannuation	7% (flexible contribution options available)
Employer Contribution to Superannuation	17%
Workplace Agreement	Charles Sturt University Enterprise Agreement 2010 – 2012
Date Last Reviewed	May 2013

### **Faculty of Education – Organisational Environment**

The Faculty of Education is one of the largest Faculties of Education in Australia with over 6,900 students and 140 academic and general staff. The Faculty offers a wide range of courses in education, information studies and human movement studies and is recognised internationally for the quality and diversity of their distance education programs. The Faculty has Schools of Education that are situated on Albury, Wagga Wagga, Bathurst, Dubbo and Ontario, Canada campuses. These Schools offer on-campus and distance education pathways to teaching in the early childhood, primary, secondary, VET sectors, as well as postgraduate studies by distance in TESOL, Inclusive Education, VET, educational leadership, teacher librarianship and literacy. The Faculty also offers honours and research higher degree programs on campus and by distance

## Organisational Chart



### Reporting Relationships

This position reports to: Head of School, Faculty of Education

This position supervises: Nil

### Position Overview

The successful candidate will teach in subjects in the Bachelor of Education (Early Childhood and Primary) and the Bachelor of Education (K-12 Middle Schooling) programs. The successful candidate will also be expected to undertake research in primary mathematics education or a related field and contribute actively to the scholarly life of the School and Faculty.

## **Principal Responsibilities (Appointments Level B and C)**

### **Teaching**

- Teach effectively Primary Mathematics Education subjects in the Bachelor of Education (Early Childhood and Primary) and the Bachelor of Education (K-12 Middle Schooling) programs utilizing a range of delivery modes
- Contribute to the development of course materials for primary mathematics education
- Demonstrate an interest in either early years mathematics or secondary school mathematics
- Coordinate and /or lead the activities of other staff as appropriate to assigned projects
- Engage and consult with students to support their understanding and learning
- Undertake academic management and leadership to promote high quality in subject delivery and development.
- Provide support for other positions during absences

### **Research**

- Engage in independent scholarship and professional activities appropriate to the Mathematics Education discipline.
- Undertake independently, academic activities in his/her discipline, which may include teaching and/or research / creative works or professional activity;
- Develop a research program, including external funding
- Conduct research and publish scholarly papers
- Develop a program of applied and contract research in the area of mathematics education
- Work with colleagues and postgraduates in the development of joint research projects
- Foster the School's relations with industry, government departments, professional bodies and the wider community

### **Administration**

- Perform a range of administrative functions in the School primarily relating to his/her activities at the University and may be required to perform the full academic responsibilities of and related administration for the coordination of an award program of the University.
- Contribute to the processes that enable the academic team to manage the work of the School of Education including participating in School decision-making and serving on School committees

## **Additional for principal responsibilities appointments at level C**

### **Teaching**

- Take a leadership role in the Faculty and School
- Demonstrate capacity in Course development

### **Research**

- Leadership in research
- Demonstrate success in attracting external funding

### **Administration**

- Take a leadership role in the Faculty and School.

**Key Challenges**

A key challenge for this position is to teach and research in primary mathematics education with the capacity to contribute to either Early Childhood or Middle Schooling Mathematics teaching and research.

**Capabilities**

- Demonstrated ability to be adaptive and accepting of new ideas, and a willingness to approach new challenges and adjust plans to meet new priorities.
- The ability to work harmoniously and constructively with other members of the department
- Ability to coordinate, lead and motivate others in the achievement of project goals or professional activities as appropriate to the discipline.
- Ability to regulate one's own behaviour, and act appropriately in the execution of duties.
- Possess the enthusiasm and energy to set and meet challenging objectives and to organise resources in order to achieve outcomes in a timely manner.

## Selection Criteria

Applicants are expected to address the selection criteria when applying for this position

### Essential for appointments at level B & C

1. A Doctoral or Masters qualification in Education, and undergraduate and postgraduate qualifications in Mathematics Education, or equivalent level of accreditation and standing;
2. Record of research, publication or professional activity relevant to the discipline area which demonstrates the capacity to make an autonomous contribution and capacity to reach milestones, targets, and outputs and to make an independent contribution to the field;
3. Significant teaching experience in primary school mathematics settings;
4. Teaching experience/demonstrated success in tertiary settings or experience in leading professional development with teachers;
5. A strong knowledge base in primary mathematics education underpinned by knowledge of contemporary trends, research, principles and practices of teaching and learning Mathematics;
6. Ability to integrate Information and Communication Technology (ICT) across the curriculum and model its effective use in teaching;
7. Commitment to and experience with incorporating social justice approaches in teaching with particular emphasis on the incorporation of Indigenous perspectives;
8. Ability to work both independently and constructively in a team environment and provide leadership in team settings as required;
9. Demonstrable interest in Middle Schooling or Early Childhood mathematics education;
10. Ability to contribute to teaching at undergraduate, honours and postgraduate levels;
11. Demonstrated ability to undertake the course administrative functions required of the position
12. Ability and interest in supervising honours and postgraduate research students.

### Essential for appointments at level C

1. A Doctoral qualification in Education, and undergraduate and postgraduate qualifications in Mathematics Education, or equivalent level of accreditation and standing;
2. Leadership in research programs in primary mathematics education;
3. Record of significant achievement relevant to the discipline area, and at national level, in the scholarship of teaching and/or research or professional activity.

### Desirable

1. Doctorate in Mathematics Education
2. Demonstrable excellence in research and publication trajectories appropriate to career stage;
3. A developing research agenda that can be aligned to RIPPLE's 'Educational Transition and Change' Research Group or the Faculty's 'Mathematics Education and Assessment' Priority Area.

#### Further information is available from

Professor Lindsay Parry  
Head, School of Education  
(02) 6933 2224  
[lparry@csu.edu.au](mailto:lparry@csu.edu.au)

## **Information for Prospective Staff**

### **Your Application**

E-recruitment is the method by which CSU manages its recruitment processes and it is preferred that all applications be lodged using this method. Please refer to [www.csu.edu.au/jobs/](http://www.csu.edu.au/jobs/)

If intending applicants are unable to access this website, please contact the HR Service Centre on 02 6338 4884 or 1800 688 117.

### **Staff Benefits**

CSU is committed to providing an employment environment that fosters teamwork, innovation, reflective practice, continual learning, knowledge sharing and opportunities for staff to achieve their full potential. CSU is committed to providing a flexible working environment that encourages employees to live a balanced lifestyle, combining work and family responsibilities.

To find out more: <http://www.csu.edu.au/jobs/benefits/>

### **Essential Information for Staff**

- All employees have an obligation to comply with all the University's workplace health & safety policies, procedures and instructions and not place at risk the health and safety of any other person in the workplace;
- All employees are required to be aware of and demonstrate a commitment to the principles of equal opportunity in the workplace;
- All employees are to ensure the creation and maintenance of full and accurate records of official University business adheres to the University's Records Management Policies; and
- All employees are expected to undertake an induction program on commencement.

Further information regarding the policy and procedures applicable to Occupational Health and Safety and Equal Opportunity can be found on the CSU website <http://www.csu.edu.au/division/hr/>

Further information regarding the policies and procedures of CSU can be found in the Administration Manual at: <http://www.csu.edu.au/adminman/hum/humanresources.htm>

Further information on Delegations is available at <http://www.csu.edu.au/adminman/del/>

**Code of Conduct:** <http://www.csu.edu.au/adminman/hum/CodeOfConduct.doc>

**CSU Enterprise Agreement 2010 -2012:** <http://www.csu.edu.au/division/hr/enterprise-agreement.pdf>