

Lecturer in Early Childhood Education

Faculty of Education

School of Education

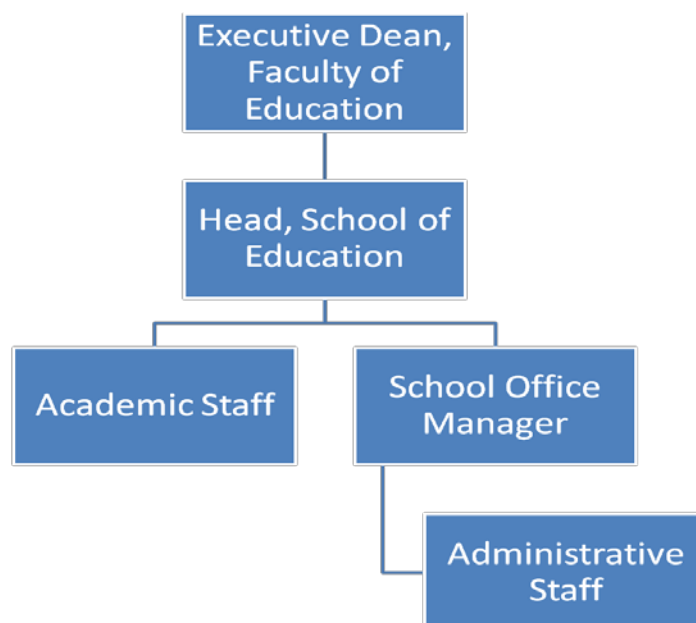
Position Number	643177
Campus	Wagga Wagga
Classification	Level B
Special Conditions	Nil
Nature of Employment	Fixed Term
Employee Contribution to Superannuation	7% (flexible contribution options available)
Employer Contribution to Superannuation	17%
Workplace Agreement	Charles Sturt University Enterprise Agreement 2010 - 2012
Date Last Reviewed	30 September 2013

Faculty of Education – Organisational Environment

The Faculty of Education is one of the largest Faculties of Education in Australia with over 6,900 students and 140 academic and general staff. The Faculty offers a wide range of courses in teacher education, information studies and human movement studies and is recognised internationally for the quality and diversity of their distance education programs.

The School of Education is located in Albury-Wodonga and Wagga Wagga and is an innovative and future focused community of scholars committed to the preparation of high quality teacher education graduates in early education - across birth to five, primary years and secondary years. It also services the Faculty's Distance Education Programs. It supports more than 400 on-campus students and over 2500 distance education students.

Organisational Chart



Reporting Relationships

This position reports to: Head of School then to the Executive Dean Faculty of Education

This position supervises: Nil

Position Overview

The Lecturer in Early Childhood Education will have a strong background in early childhood education with the relevant prior-to-school and/or early years of school experience. The successful applicant will teach in subjects at pre-service and in-service levels for internal and distance students. This position involves teaching in programs that focus on educational foundations, curriculum development and pedagogy, professionalism and leadership, and professional experience in birth to 5 years and Kindergarten to Year 6 settings.

Principal Responsibilities

Teaching and Learning

- Take a lead in writing internal, distance and flexible courses/subjects and course materials in the areas of Early Childhood Education;
- Convene subjects and teach in the areas of Early Childhood Education and other programs as required;
- Coordinate Early Childhood Education subjects and/or courses;
- Consult with students;
- Provide support for other positions during absences;
- Contribute to the scholarship of teaching in the discipline;
- Teach effectively at undergraduate, honours and postgraduate levels;
- Undertake academic management and leadership to promote high quality in subject delivery and development;
- Contribute to the development of the discipline through research;

Community Service

- Foster the School's relations with community, government departments, professional bodies and the wider Australian and international communities;

Administration

- Perform a range of administrative functions in the School;
- Contribute to the processes that enable the academic team to manage the work of the School, including participating in School decision-making and serving on School committees

Selection Criteria

Applicants are expected to address the selection criteria when applying for this position.

Essential for Appointment as Lecturer

1. A doctoral or masters qualification relevant to Early Childhood Education or equivalent accreditation and standing;
2. A record of research and/or professional activity relevant to Early Childhood Education, which demonstrates a capacity to make an autonomous contribution;
3. Demonstrated understanding of trends and issues in Early Childhood Education;
4. Demonstrated capacity to teaching at tertiary level and commitment to actively incorporate Indigenous perspectives and address social justice issues in teaching;
5. Excellent communication skills and demonstrated capacity to work as a member of a team of academic staff;
6. Demonstrated ability to integrate ICT across the curriculum and model its effective use in teaching.

Desirable for Appointment as Lecturer

1. Demonstrated knowledge of primary settings.

Further information is available from

Professor Lindsay Parry
Head, School of Education

Phone: (02) 6933 2224

Email: lparry@csu.edu.au

Information for Prospective Staff

Your Application

E-recruitment is the method by which CSU manages its recruitment processes and it is preferred that all applications be lodged using this method. Please refer to www.csu.edu.au/jobs/

If intending applicants are unable to access this website, please contact the HR Service Centre on 02 6338 4884 or 1800 688 117.

Staff Benefits

CSU is committed to providing an employment environment that fosters teamwork, innovation, reflective practice, continual learning, knowledge sharing and opportunities for staff to achieve their full potential. CSU is committed to providing a flexible working environment that encourages employees to live a balanced lifestyle, combining work and family responsibilities.

To find out more: <http://www.csu.edu.au/jobs/benefits/>

Essential Information for Staff

- All employees have an obligation to comply with all the University's workplace health & safety policies, procedures and instructions and not place at risk the health and safety of any other person in the workplace;
- All employees are required to be aware of and demonstrate a commitment to the principles of equal opportunity in the workplace;
- All employees are to ensure the creation and maintenance of full and accurate records of official University business adheres to the University's Records Management Policies; and
- All employees are expected to undertake an induction program on commencement.

Further information regarding the policy and procedures applicable to Occupational Health and Safety and Equal Opportunity can be found on the CSU website <http://www.csu.edu.au/division/hr/>

Further information regarding the policies and procedures of CSU can be found in the Administration Manual at: <http://www.csu.edu.au/adminman/hum/humanresources.htm>

Further information on Delegations is available at <http://www.csu.edu.au/adminman/del/>

Code of Conduct: <http://www.csu.edu.au/adminman/hum/CodeOfConduct.doc>

CSU Enterprise Agreement 2010 -2012: <http://www.csu.edu.au/division/hr/enterprise-agreement.pdf>